

MONTHLY MEMBERSHIP PROGRESS REPORT

LOCATION INDIA

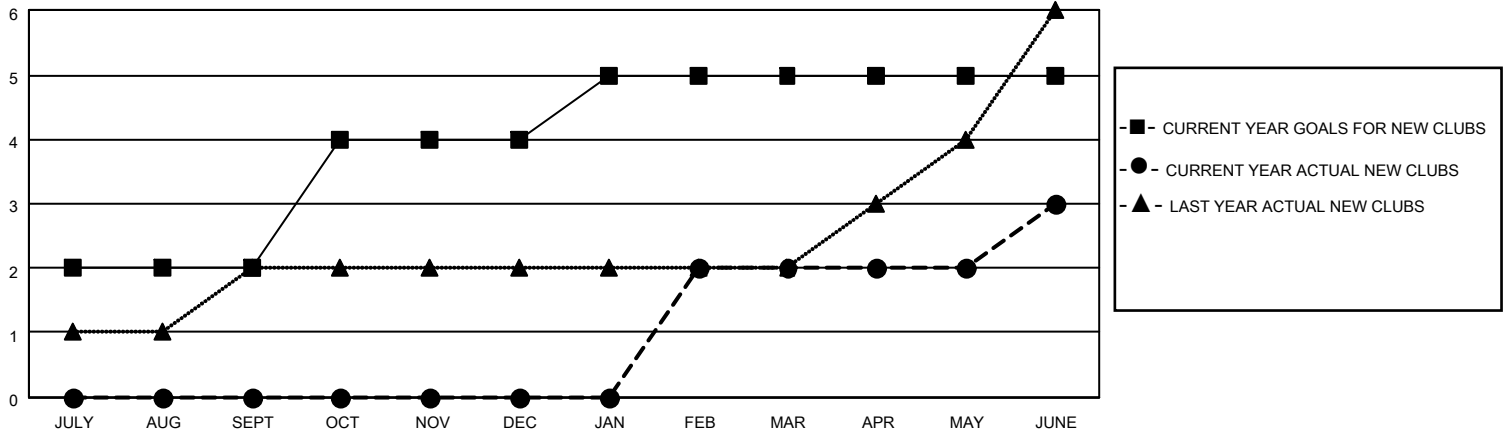
District 322C4

Results as of: 6/30/2023

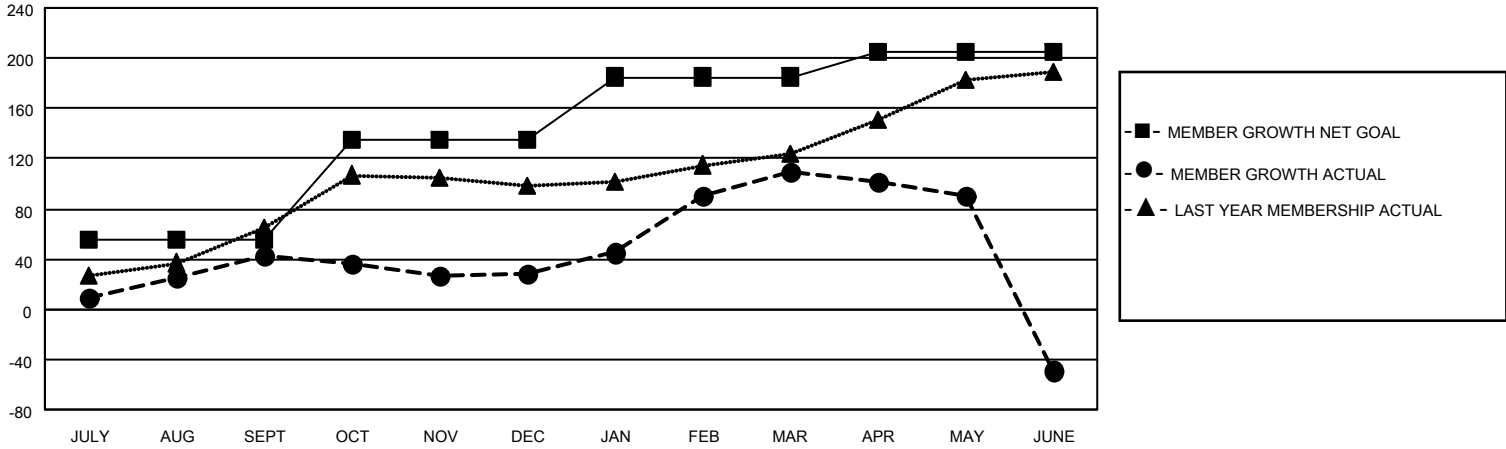
Clubs			
RESULTS FOR 2022-2023			
QUARTER	NEW CLUB GOAL	NEW CLUBS	DROPPED CLUBS
JULY/AUG/SEPT	2	0	0
OCT/NOV/DEC	2	0	0
JAN/FEB/MAR	1	2	0
APR/MAY/JUNE	0	1	4

Members			
RESULTS FOR 2022-2023			
QUARTER	MEMBER GROWTH NET GOAL	MEMBER GROWTH ACTUAL	DROPPED MEMBERS ACTUAL (including transfers)
JULY/AUG/SEPT	55	62	14
OCT/NOV/DEC	80	22	35
JAN/FEB/MAR	50	91	6
APR/MAY/JUNE	20	68	214

GOALS AND ACTUAL NEW CLUBS CUMULATIVE



GOALS AND ACTUAL MEMBERS CUMULATIVE



DROPPED CLUBS: 4	
DROPPED MEMBERS	
DECEASED	5
CLUB CANCELLED	90
OTHER	174
TOTAL	269

30 CLUBS OF 49 ADDED 1 OR MORE NEW MEMBERS

[CLICK HERE FOR CUMULATIVE MEMBERSHIP DATA](#)

<u>GENDER DISTRIBUTION</u>	
MALE	915 (63.10%)
FEMALE	535 (36.90%)
NON BINARY	0 (0.00%)
PREFER NOT TO ANSWER	0 (0.00%)
TOTAL FAMILY UNIT MEMBERS	938
FAMILY MEMBERS PAYING HALF DUES	577